

Elix



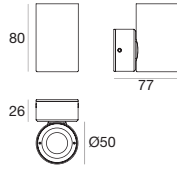
A single emission wall light with a **streamlined design**, available in a rectangular or cylindrical shape. In addition to a wide range of finishes and optics, Elix features up to four different light powers that provide **specific illuminance levels** and satisfy the most diverse requirements. Also available with RGB LED.

Passive heat dissipation
Anodised aluminium casing

Light management
Three optics available ensuring maximum design flexibility



Elix_R | Wall light | 190-250 V | powerLED 2 W 630 mA



type

Grey	CRI 80	97511
Cor-Ten	CRI 80	97512

colour

3000 K	208 lm	W
4000 K	222 lm	N
5000 K	253 lm	C

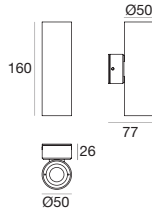
R - G - B - Y on request

optic

15°	15
30°	30
60°	60



Elix_R | Wall light | 190-250 V | powerLED 4 W 630 mA



type

Grey	CRI 80	97527
Cor-Ten	CRI 80	97528

colour

3000 K	416 lm	W
4000 K	444 lm	N
5000 K	506 lm	C

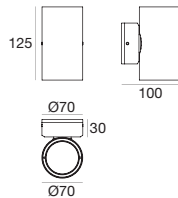
R - G - B - Y on request

optic

15°	15
30°	30
60°	60



Elix_R | Wall light | 180-300 V | powerLED 6 W 630 mA



type

Grey	CRI 80	97515
Cor-Ten	CRI 80	97516

colour

3000 K	624 lm	W
4000 K	666 lm	N
5000 K	759 lm	C

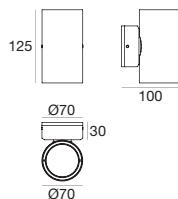
R - G - B - Y on request

optic

15°	15
30°	30
60°	60



Elix_R | Wall light | 180-300 V | powerLED 12 W 630 mA



type

Grey	CRI 80	97531
Cor-Ten	CRI 80	97532

colour

3000 K	1248 lm	W
4000 K	1332 lm	N
5000 K	1518 lm	C

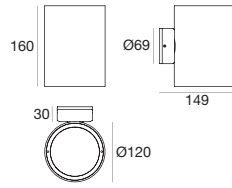
R - G - B - Y on request

optic

15°	15
30°	30
60°	60



Elix_R | Wall light | 180-300 V | powerLED 12 W 630 mA

**type**

Grey	CRI 80	97519
Cor-Ten	CRI 80	97520

colour

3000 K	1248 lm	W
4000 K	1332 lm	N
5000 K	1518 lm	C

R - G - B - Y on request

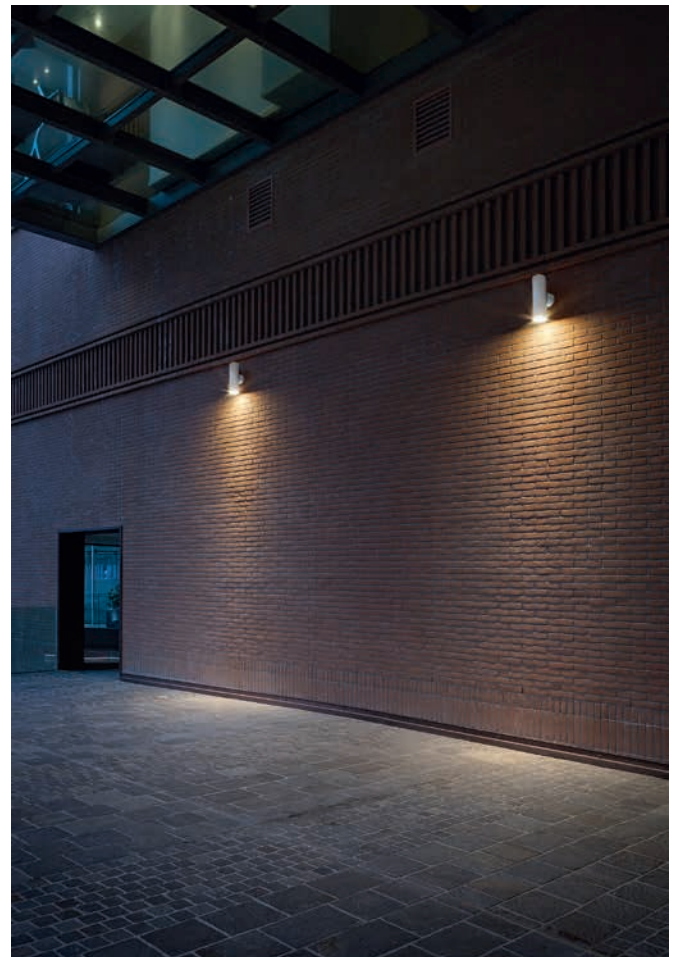
optic

15°	15
30°	30
60°	60

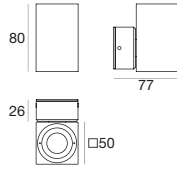


"Almar Hotel" - Jesolo (Italy)

The soft light beams of Elix wall lights enhance the characteristic brickwork walls of the Hotel Almar in Jesolo, emphasising relief shapes and enveloping the building in an evocative atmosphere. Light gives new life to a wealth of details that deserve attention.



Elix_Q | Wall light | 190-250 V | powerLED 2 W 630 mA



type

Grey	CRI 80	97513
Cor-Ten	CRI 80	97514

colour

3000 K	208 lm	W
4000 K	222 lm	N
5000 K	253 lm	C

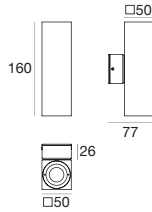
R - G - B - Y on request

optic

15°	15
30°	30
60°	60



Elix_Q | Wall light | 190-250 V | powerLED 4 W 630 mA



type

Grey	CRI 80	97529
Cor-Ten	CRI 80	97530

colour

3000 K	416 lm	W
4000 K	444 lm	N
5000 K	506 lm	C

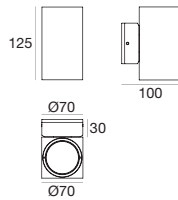
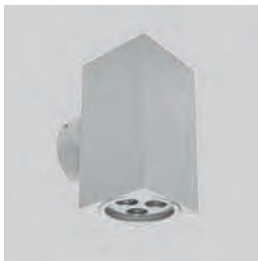
R - G - B - Y on request

optic

15°	15
30°	30
60°	60



Elix_Q | Wall light | 180-300 V | powerLED 6 W 630 mA



type

Grey	CRI 80	97517
Cor-Ten	CRI 80	97518

colour

3000 K	624 lm	W
4000 K	666 lm	N
5000 K	759 lm	C

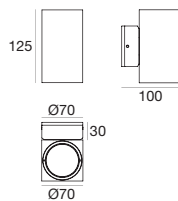
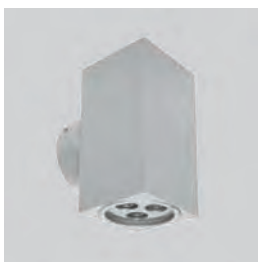
R - G - B - Y on request

optic

15°	15
30°	30
60°	60



Elix_Q | Wall light | 180-300 V | powerLED 12 W 630 mA



type

Grey	CRI 80	97533
Cor-Ten	CRI 80	97534

colour

3000 K	1248 lm	W
4000 K	1332 lm	N
5000 K	1518 lm	C

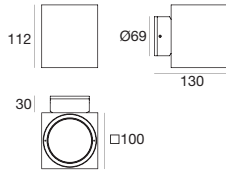
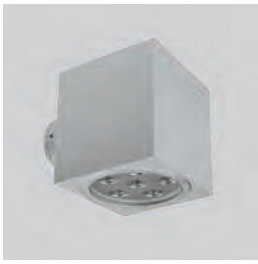
R - G - B - Y on request

optic

15°	15
30°	30
60°	60



Elix_Q | Wall light | 180-300 V | powerLED 12 W 630 mA



type

Grey	CRI 80	97521
Cor-Ten	CRI 80	97522

colour

3000 K	1248 lm	W
4000 K	1332 lm	N
5000 K	1518 lm	C

R - G - B - Y on request

optic

15°	15
30°	30
60°	60

