



**Your success – in the perfect
light, with the best design**

Hess – time for something special

Beautiful buildings – from industrial and administrative centres to hospitals, from schools, and universities to museums – perfectly integrated in carefully designed urban spaces – all **set in a sophisticated scene.**

Premium supplier of design-oriented outdoor lighting and street and site furnishing, Hess has been dedicated to this sensitive yet exciting challenge – for more than half a century.

With our extraordinary **design language**, haptic and quality, our products **perfectly** blend into the architectural surrounding. But they can also be put in evidence, deliberately creating a **contrast.**

With Hess, discover a wide range of products and solutions, from multifunctional lighting systems to custom services – all according to your needs. At night, our **quality lighting**, intelligent control and dimming systems ensure that your **site** and **values** are shown in the perfect light.

Hess creates real highlights – by day and by night.

www.hess.eu





Hess . A member of the Nordeon Group

Content

Atmosphere	8 . 11
Added value	12 . 15
Design	16 . 19

References	20 . 31
------------	---------

Nordeon Group	32 . 39
---------------	---------

ATMOSPHERE

By day, Hess elegant luminaires impress the onlookers with an inimitable design expression and appearance. By night, the wide variety of optics and light colour perfectly illuminate the surroundings.

Hess – the perfect atmosphere by day and by night.



Schwarzwald-Baar-Klinikum, GER
FARO

ADDED VALUE

Expect more with Hess. Multifunctional lighting systems make your building more attractive, more interconnected, offering better communication and security.

Hess – adding value through multifunctionality.



Kö-Bogen Düsseldorf, GER
CITY ELEMENTS and LEDIA

DESIGN

Perfect presentation at night – representative, characteristic and distinctive. Hess sets your values in best light.

Hess – design through illumination.



Hebei Bibliothek Shijiazhuang, CN
FARINO and CITY ELEMENTS

ATMOSPHERE

Make your customers, guests, staff and visitors feel **welcome** as soon as they set foot on your site – with your holistic design and appearance.

Hess luminaires stand for **inimitable design**. A design language fitted to any architectural requirement. A design that **harmonise with architecture**. Or a design that deliberately creates **contrasts**.

No matter what you choose, the **impressive daytime appearance** of Hess luminaires is the highlight.

Atmosphere by day ...





Sunyard München, GER
VIGO QG

... and by night!

Hess turns night into day – only if necessary. In fact, we provide a variety of optics and colour temperature to recreate the right light, **the best light**. For example, a high sense of security on paths and building entrances at night, a tangible **sense of peace** with comforting, **warm light atmospheres** and a high quality of light.

Intelligent lighting and dimming systems give you the **complete control** – so that you are always immersed in the best light.

Hess – the perfect atmosphere by day and by night!





Kohler
BETRIEBSEINRICHTUNGEN

4

Kohler Betriebseinrichtungen, Immendingen GER
LINEA and GENUA

ADDED VALUE

Squares, forecourts and courtyards – **attracting your audience and reflecting your values**. As places to greet, **meet** or entertain your customers, visitors and employees, they radiate a **welcoming atmosphere** and invite people to linger and enjoy the ambience.

Hess **multifunctional lighting systems** offer you even more – more than light. **Individually configurable** and tailored to your wants and needs.

There's just one question to answer:
What are you looking for...?





Mercedes-Benz Arena Berlin, GER
CITY ELEMENTS

Do you want **highlight a special detail** through spotlights?

Do you want **excellent connectivity** through integrated Wi-Fi?

Do you want **entertainment and communication** through integrated loudspeakers?

Do you want **security** through integrated cameras?

Do you want to include water or electricity **supply**?

We can make your idea a reality. Perfectly integrated into our multifunctional lighting system.

Hess – added value through multifunctionality.



www.hess.eu/cityelements





DESIGN

When the sun starts to set, your **façade lights up** – leaving a **lasting impression** on your customers, visitors and guests. With innovative products, lighting solutions and the right instinct, Hess can effectively transform your building architectural elements and façades into magnificent highlights – creating a **representative image of your values** by night.

Hess – design through illumination.



Sheraton Hotel, UAE
Powershine MK2 D RGBW, ZAPHIR RGBW (GRIVEN)





Falcon Market Doha, QA
TERAMO

ATMOSPHERE, ADDED VALUE, DESIGN

Hess stands for something special. Hess is your partner for any of **your design challenges**.





With **atmosphere, added value** and **design**,
we can put your values and your buildings in the spot light – by
day and by night.

**Hess – making your
presence unique.**



REFERENCE

MAN Headquarter Munich, GER









REFERENCE

SGL Group Wiesbaden, GER



REFERENCE

University of Minnesota, USA







BMW Museum Munich, GER







REFERENCE

TESTO Titisee-Neustadt, GER



ARTIC Anaheim, USA



NORDEON GROUP

The Nordeon Group – for any lighting technology demand

The Nordeon Group is one of Europe's leading lighting company. Alongside Hess, it includes other leading premium companies in the lighting sector.

As equivalent to Hess, WILA has specialised in high-quality interior lighting solutions with relevant expertise in visual design for offices, medical centres, universities, shops and showrooms.

Our Italian affiliate GRIVEN focuses on creating high quality, powerful spotlighting and architectural lighting solutions. Its innovative LED products enable the creation of spectacular as well as restrained lighting settings and effects with limitless possibilities.

With NORDEON's sites in Germany and France, the Group includes a strong company specialised in powerful, long-lasting LED lighting and light management solutions – with one clear focus: efficient interior lighting for industry and retail.

Architects, planners, light designers and industrial customers can therefore choose from a comprehensive solution portfolio for both internal and external lighting, as well as spectacular architectural lighting options.

The Nordeon Group – a strong partner by your side.

13 5 12

◆ Headquarters ■ Production ● Sales

- 1 NORDEON GROUP Headquarters, Eindhoven (NL)
- 2 NORDEON, Springe (GER) + VULKAN, Springe (GER)
- 3 Hess, Villingen-Schwenningen (GER)
- 4 NORDEON, Chalon sur Saône (FR)
- 5 Hess America, Gaffney (SC/US)
- 6 Hess Spain, Barcelona (ES)
- 7 Hess Belgium, Antwerpen (BE)
- 8 Hess Austria, Götzis (AT)
- 9 Hess UK, London (UK)
- 10 Hess France (FR)
- 11 WILA, Iserlohn (GER) | WILA, Wantage (UK)
- 12 Griven, Castel Goffredo (IT) | Griven USA, Gaffney (SC/US)
- 13 Nordeon USA, Gaffney (SC/US)



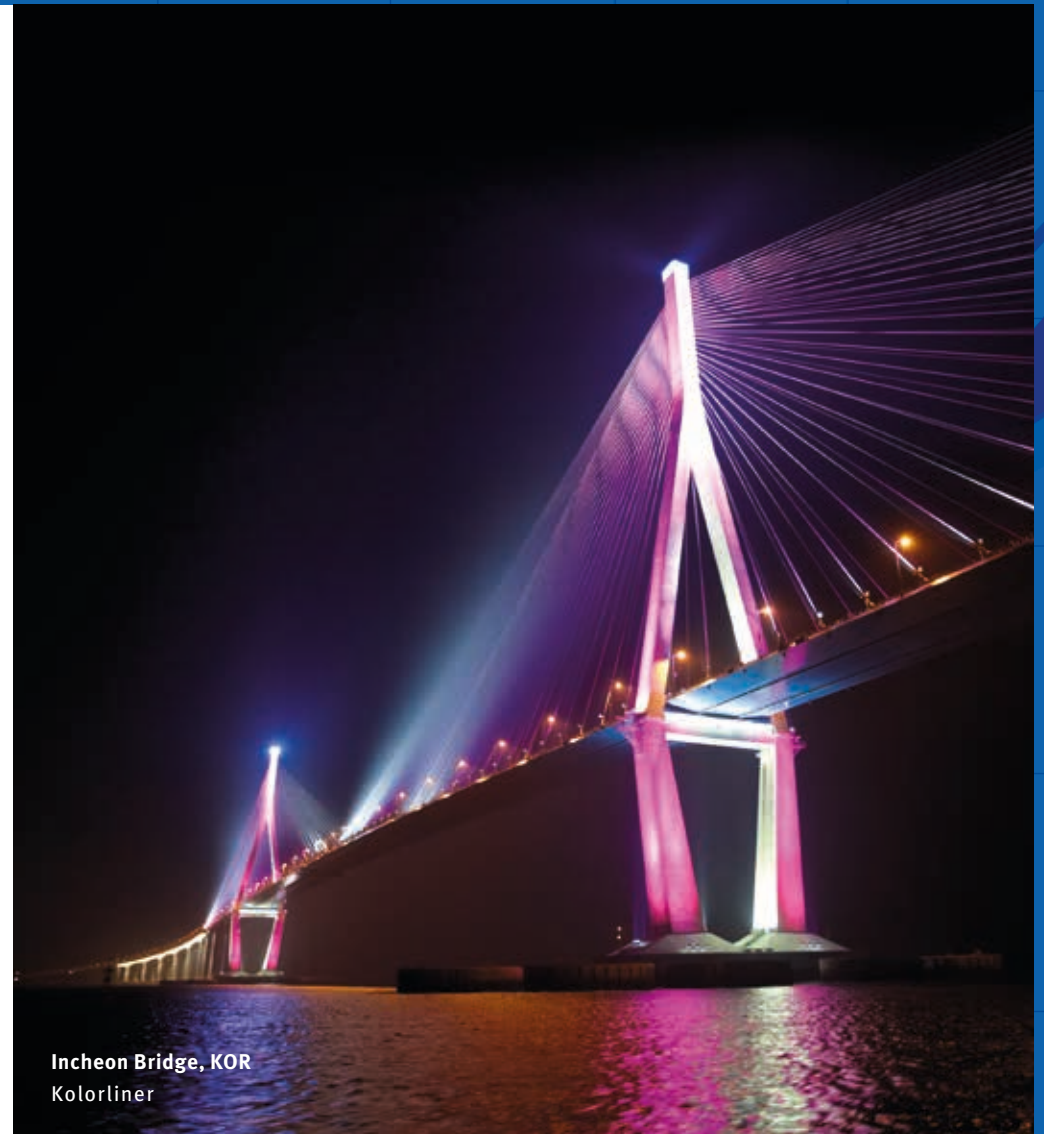
Founded in Italy in 1990, GRIVEN has established itself as a world-leading manufacturer in the architectural lighting market – particularly within the high power segment.

The company's portfolio of top-of-the-range projectors – surface-mountable, modular, linear, recessable, underwater and for visualisations – enable the creation of refined architectural lighting solutions for the most demanding design requirements.

Innovation and durability have always been core values to GRIVEN. Today, sustainability and efficiency are the technical guidelines for GRIVEN products – proudly made in Italy, result of high standards in construction, development, production and design.



Griven . A member of the Nordeon Group
www.griven.com



Incheon Bridge, KOR
Kolorliner

Vulkan

since 1898

Vulkan's roots go all the way back to 1898, making it one of the oldest brands in the lighting industry that enjoys a very good reputation, particularly within the German-speaking area.

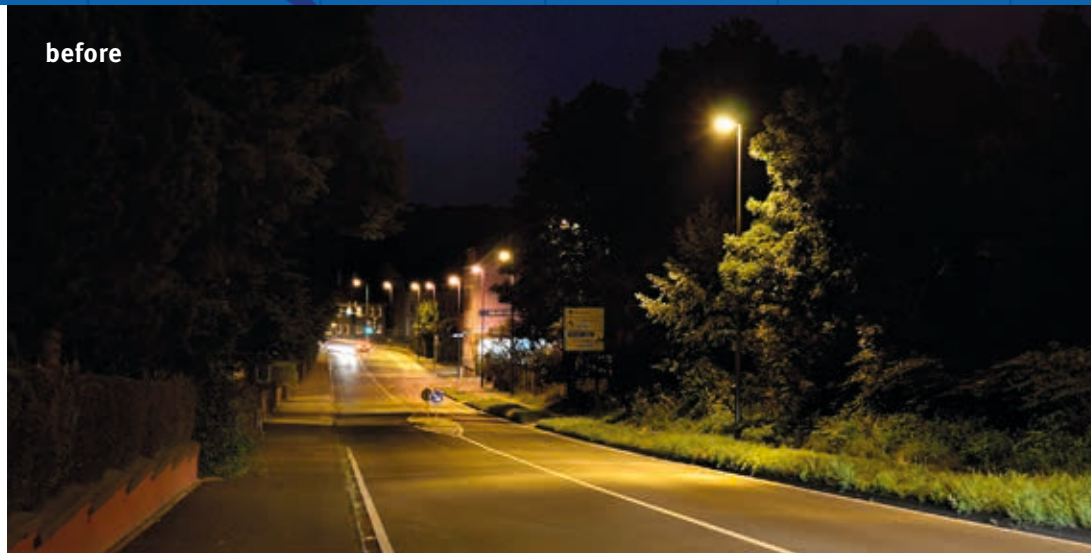
Building on more than 100 years of experience, Vulkan offers cities, communities and utility companies both technically advanced and elegant products.

Products that deliver lighting solutions for streets, traffic junctions, danger spots, pedestrian areas and public buildings and that comply with all the standards.



Vulkan . A member of the Nordeon Group
www.vulkan.eu

before



after



Wuppertal, GER
V3630

WILA

WILA is an internationally renowned premium brand for architectural interior lighting, serving customers worldwide from its locations in the United Kingdom and Germany.

The company works closely with lighting professionals to realise unique lighting concepts for improving the visual environment. This is reached by involving all parties in an intensive dialogue right from the design stage.

With its uniquely integrative design concept, flexible technologies and optimised efficiency, WILA can create completely customised solutions for illuminating offices, hospitals, universities, shops and large infrastructural projects, such as airports.



WILA . A member of the Nordeon Group
www.wila.com



Oxford University, UK
Halo

NORDEON

Nordeon is a young and innovative manufacturer of interior lighting products. Young, but with a proven track record.

The company sets itself apart by merging a wealth of experience in engineering professional luminaires with the speed and flexibility of a young and high tech business.

It combines the extensive range of new available options for optical, electro technical and mechanical system development with many years of experience in luminaire production. Inventions such as the light band system are the proof of its experience and knowledge in the field.

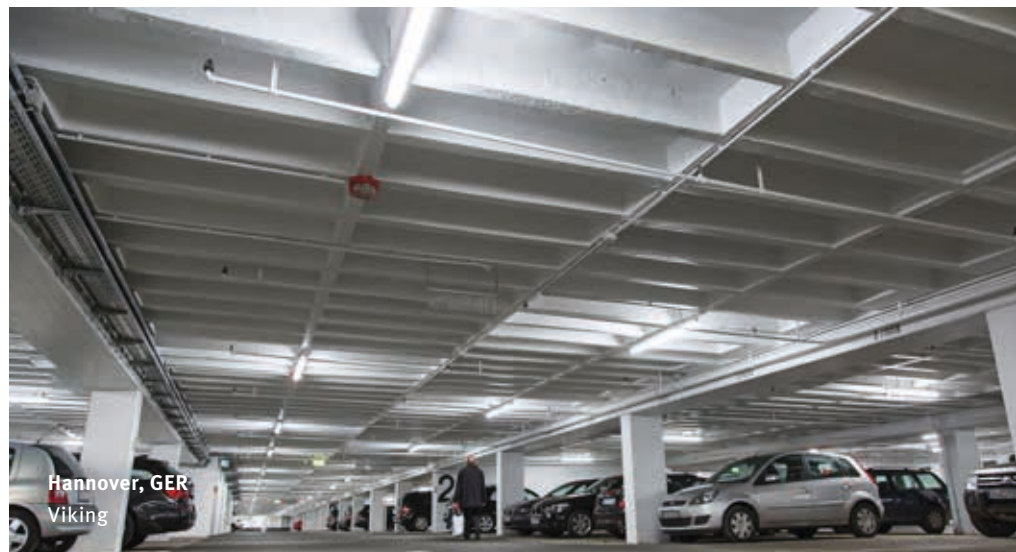
Nordeon's mission is to introduce lighting solutions that have a maximum 2-year amortisation period.



Nordeon . A member of the Nordeon Group
www.nordeon.com



Petrol Industries, NL
Skadi



Hannover, GER
Viking

NORDEO



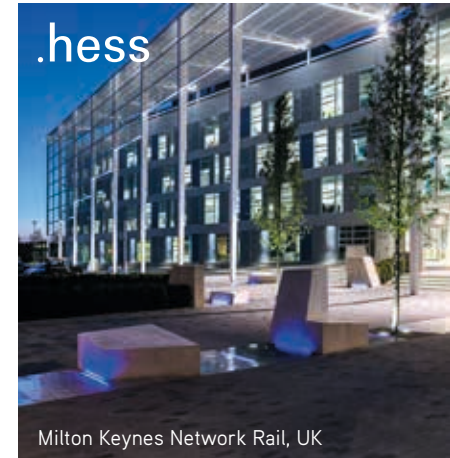
NGROUP



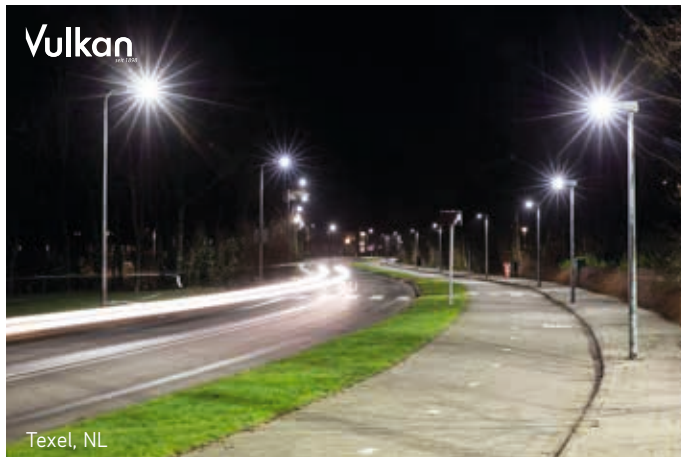
Teheran, IR



Leclerc Bricolage, FRA



Milton Keynes Network Rail, UK



Texel, NL



Baader Bank, GER



Bunyodkor Stadium, UZB

Hess GmbH Licht + Form
Lantwattenstraße 22
D-78050 Villingen-Schwenningen
Tel.: + 49 (0) 7721 920-0
E-Mail: info@hess.eu
www.hess.eu

© Hess GmbH Licht + Form
August 2016

All rights reserved.