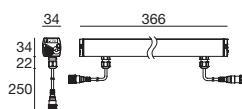




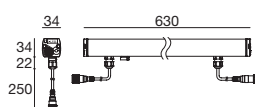
TCS valve and electric protection

Electrical, mechanical and thermal protections ensure **Xenia 2.0** a long operating life. These lighting fixtures are equipped with a TCS® Valve, specially designed to prevent moisture from forming inside the body, while safeguarding the integrity of electrical circuits and LEDs. The **Xenia 2.0** also comes with electrical (**OVP**) and thermal protections that ensure correct operation and maximum safety. They are protected from overvoltage thanks to the **OVP** (overvoltage protection) device that provides surge protection up to 6kV between Phase and Neutral and up to 10kV between Phase /Neutral and Earth. Thermal protection prevents overheating thus ensuring **Xenia 2.0** reliability and long operating life.

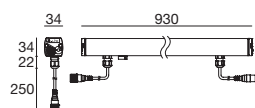


Xenia 2.0_L ON/OFF | Linear profiles | 100-240V | topLED | 20 W/m

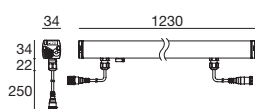
366mm - 7W		type	colour			optic	
Anod. Al.	CRI 80	93688	3000 K	672 lm	W	M. Flood	20
			4000 K	682 lm	N	Flood	50
						W. Flood	90
						Asym	07
						General	00



630mm - 13W		type	colour			optic	
Anod. Al.	CRI 80	93689	3000 K	1344 lm	W	M. Flood	20
			4000 K	1364 lm	N	Flood	50
						W. Flood	90
						Asym	07
						General	00



930mm - 19W		type	colour			optic	
Anod. Al.	CRI 80	94020	3000 K	2016 lm	W	M. Flood	20
			4000 K	2046 lm	N	Flood	50
						W. Flood	90
						Asym	07
						General	00



1230mm - 25W		type	colour			optic	
Anod. Al.	CRI 80	94023	3000 K	2688 lm	W	M. Flood	20
			4000 K	2728 lm	N	Flood	50
						W. Flood	90
						Asym	07
						General	00

Cables**Power cable - 190~250V AC - 24V DC**

1,5 m	F 4 pin M12	4 x 0,5 mm ²	99216
5 m	F 4 pin M12	4 x 0,5 mm ²	89190

Extension power cable - 190~250V AC - 24V DC

1 m	M + F 4 pin M12	4 x 0,5 mm ²	98437
5 m	M + F 4 pin M12	4 x 0,5 mm ²	98149
10 m	M + F 4 pin M12	4 x 0,5 mm ²	89188

CUSTOMOn request the light profile is available with **DALI** or **1/10V** power supply**Accessories****Anti-Glare**

For Xenia 2.0 366mm	98782
For Xenia 2.0 630mm	98783
For Xenia 2.0 930mm	98784
For Xenia 2.0 1230mm	98785

More information 82

Adjustable brackets

Lenght from 46mm to 67mm	98949
--------------------------	--------------

More information 84

Fixed steel brackets

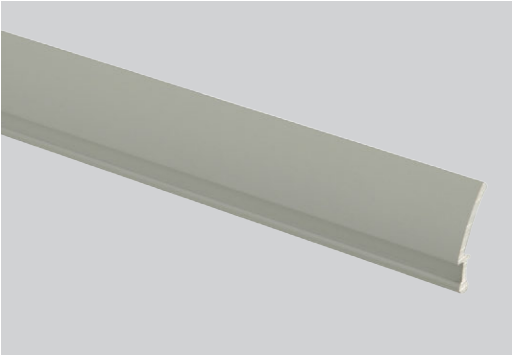
Lenght 90mm	89045
-------------	--------------

Lenght 150mm	89046
--------------	--------------

Lenght 300mm	89047
--------------	--------------

More information 84

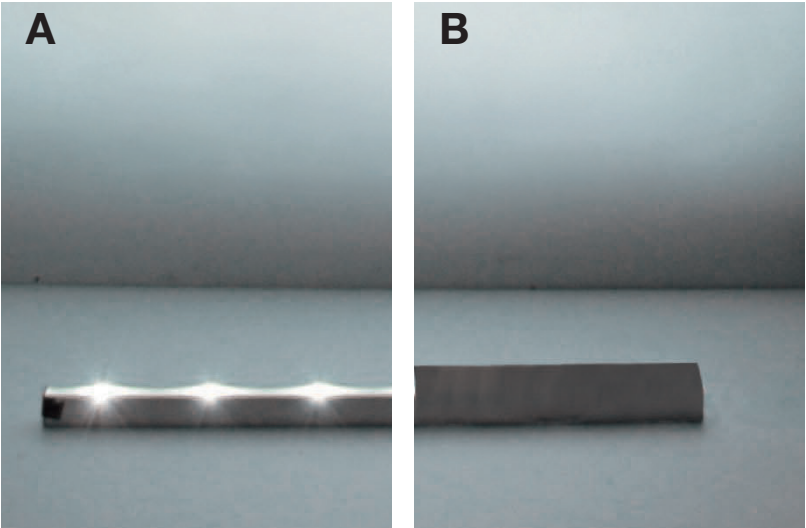
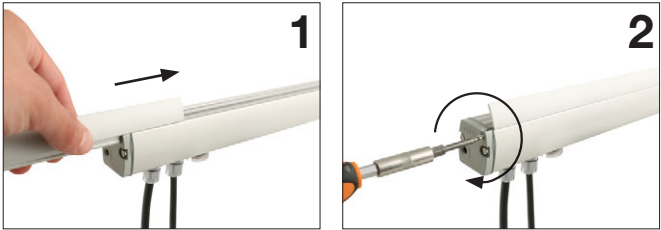




type	suitable for	
Anod. Al.	Xenia 2.0 366 mm	98782
Anod. Al.	Xenia 2.0 500 mm	98951
Anod. Al.	Xenia 2.0 535 mm	98953
Anod. Al.	Xenia 2.0 630 mm	98783
Anod. Al.	Xenia 2.0 930 mm	98784
Anod. Al.	Xenia 2.0 1182 mm	98952
Anod. Al.	Xenia 2.0 1230 mm	98785

Anti-glare

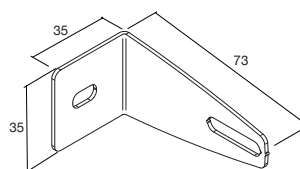
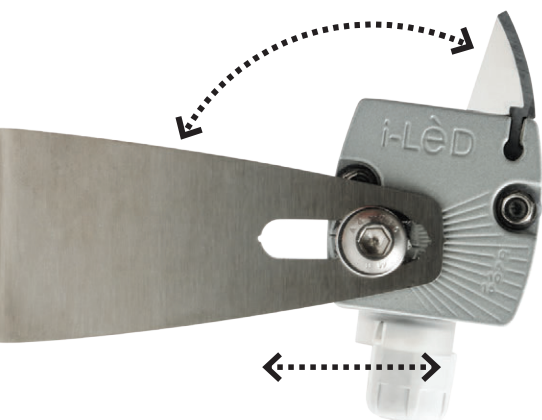
The **anti-glare** accessory greatly reduces the front glare of the LEDs. It is ideal in combination with the Asymmetric and Flood optics in wall lighting fixtures. This accessory can be easily installed by the customer even after the assembly of the LED lighting fixture (see Figures 1 and 2).



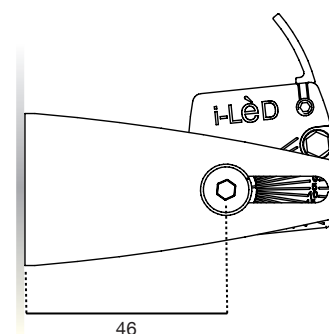
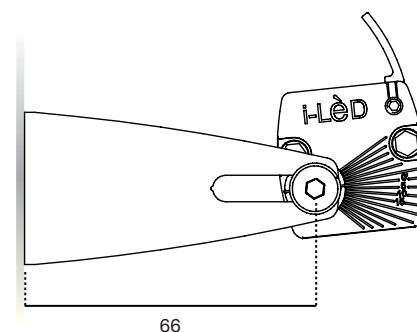
View of the bar with (fig. B) and without (fig. A) the anti-glare accessory.
Note that the light emission is not reduced by eliminating the front glare of the LEDs.

Adjustable fixing bracket

Stainless steel brackets can be adjusted with a high level of precision both in rotation and in height (46mm to 67mm) for an accurate orientation of the light beam.



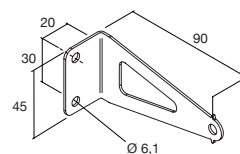
Steel **98949**



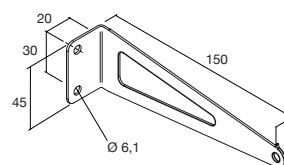
Fixing steel brackets

Fixing brackets

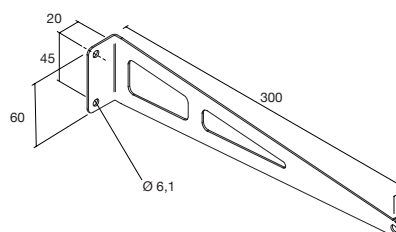
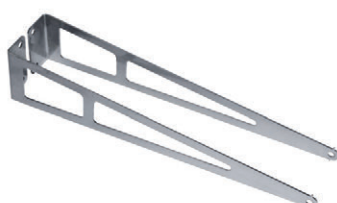
Brackets for fixing and rotating Xenia linear spotlights. Polished AISI 304.



Steel **89045**



Steel **89046**



Steel **89047**