

Vedette_Q Inox

Light management: versions with single or double emission and up to **4 different optics** available

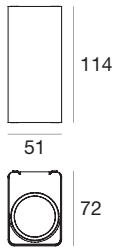
Passive heat dissipation: brushed stainless **steel** casing

Independent power supply: **resin-potted driver integrated** in the lighting fixture casing and neoprene cables

Black silk-screened pattern

along the glass edge for glare reduction and groove to allow rainwater to drain off



Vedette_Q Inox Wall light - Single emission - PowerLED 2 W

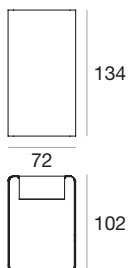
type

Inox	95154
------	--------------

colour

colour	lm	CRI	code	optic	code
Natural	222 lm	CRI 80	N	8°	08
Warm	208 lm	CRI 80	W	15°	15
Super W	195 lm	CRI 80	M	30°	30
				60°	60

optic

Vedette_Q Inox Wall light - Single emission - PowerLEDs 6,5 W

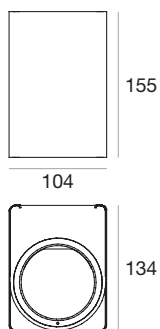
type

Inox	95157
------	--------------

colour

colour	lm	CRI	code	optic	code
Natural	490 lm	CRI 80	N	15°	15
Warm	443 lm	CRI 80	W	30°	30
Super W	420 lm	CRI 80	M	60°	60

optic

Vedette_Q Inox Wall light - Single emission - PowerLEDs 13 W

type

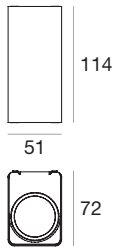
Inox	95160
------	--------------

colour

colour	lm	CRI	code	optic	code
Natural	1497 lm	CRI 83	N	15°	15
Warm	1400 lm	CRI 83	W	30°	30
Super W	1298 lm	CRI 83	M	60°	60

optic

Vedette_Q Inox Wall light - Double emission - PowerLED 2+2 W



type

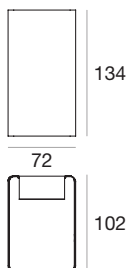
Inox **95862**

colour

colour	lumens	CRI	beam angle	optics
Natural	444 lm	CRI 80	N	8° 08
Warm	416 lm	CRI 80	W	15° 15
Super W	390 lm	CRI 80	M	30° 30
				60° 60

optic

Vedette_Q Inox Wall light - Double emission - PowerLEDs 2,5+2,5 W



type

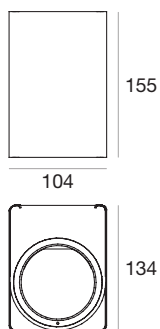
Inox **95863**

colour

colour	lumens	CRI	beam angle	optics
Natural	700 lm	CRI 80	N	15° 15
Warm	680 lm	CRI 80	W	30° 30
Super W	626 lm	CRI 80	M	60° 60

optic

Vedette_Q Inox Wall light - Double emission - PowerLEDs 5+5 W



type

Inox **95161**

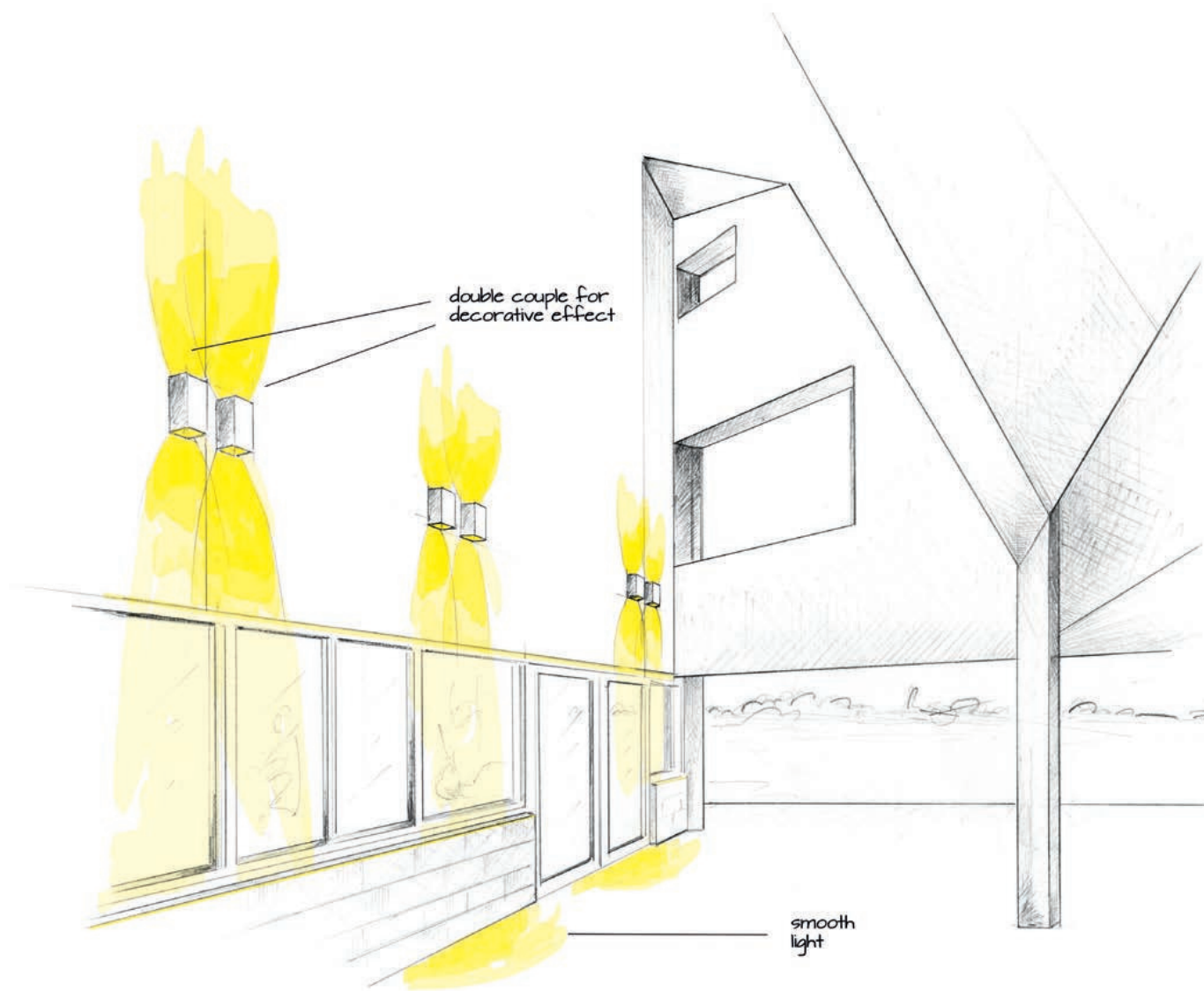
colour

colour	lumens	CRI	beam angle	optics
Natural	1004 lm	CRI 83	N	15° 15
Warm	940 lm	CRI 83	W	30° 30
Super W	878 lm	CRI 83	M	60° 60

optic



Outdoor



Vedette_Q

- 30° emission
- 3000 K
- Anti-corrosion

Two pairs of wall lights provide **higher illuminance** at ground level

The upward light beams create an aesthetic intertwined effect

The lighting fixtures are arranged in an **original** pattern even when they are off

Outdoor