





# IMAGE PROJECTION

This series offers manifold solutions to the most demanding application requirements in the global market of display projection. Company logos, promotional campaigns, graphic designs or decorative patterns can be easily projected, with a bright and accurate rendition, onto surfaces of almost any kind in the most diverse permanent outdoor and indoor locations. Packed with groundbreaking LED technology, a broad choice of assorted light output capabilities and beam angle apertures, besides multiple effects and patterns, these IP65 rated image projectors offer maximum versatility, flexibility and dynamism to the most creative light planning integration.




IMAGE PROJECTION



# GOBOLED 7-pro



Packed with multiple effects and patterns, GOBOLED 7-PRO offers broad creative design integration for permanent exterior installations. Fitted with one high power LED, this image projector delivers a bright and accurate rendition of graphic designs or logos in outdoor and indoor locations.



## TECHNICAL SPECIFICATIONS

- 1 high brightness power 6500K LED unit
- Linear 0-100% dimmer function
- RDM function
- DMX, automatic and Master-Slave mode
- 12 DMX channels
- Strobe function (27.7 FPS max)
- Electronic blackout
- Motorized focus
- 7 rotating gobos + white (ø 27/22 mm), 16 bit indexing
- 4 fixed gobos plus animation effect + white
- 8 colours + white
- 3 prisms with variable rotation (3 - 8 facets and 3D effect)
- Pulsation effect

- Power supply: 110÷240V / 50-60Hz
- Power consumption: 230W max
- Electrical class: I
- Meets CE safety standards
- Aluminium body with an adjustable mounting yoke
- IP66
- Front glass: IK07
- Operating temperature: -30°(-22°F) to 50°C (122°F)
- Integrated electronic thermal protection management
- 20 Kg

DIGITAL CONTROL SYSTEM SPECIFICATIONS AND CONFIGURATIONS AVAILABLE ON OUR WEBSITE





# GOBOLED 7-Pro

IMAGE PROJECTION

## CODES

AL5160 GoboLED 7-Pro

AL5161 11° Optics

AL5162 20° Optics

AL5163 31° Optics

## NOTES

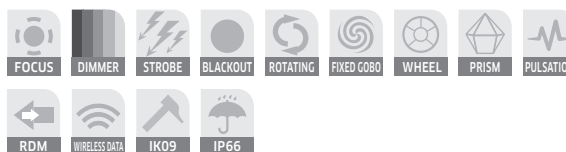
GoboLED 7-Pro must be purchased with at least one of the above mentioned optics.

## ACCESSORIES



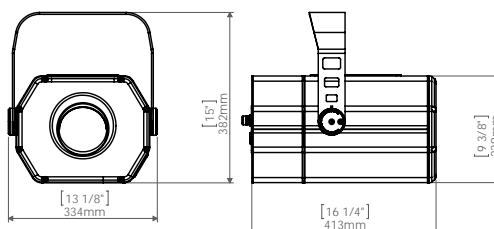
AL0250 SAFETY CABLE

## PRODUCT FEATURES



## BEAM ANGLE REFERENCE

PROJECTION ANGLE 11° ÷ 31°



PHOTOMETRIC DETAILS AVAILABLE ON OUR WEBSITE







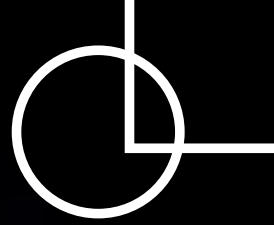


IMAGE PROJECTION

 GRIVEN