

track system



..... Suspension



..... Recess

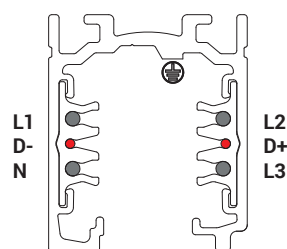
Electrified track made of extruded aluminium, painted with epoxy powders. Ceiling-mounted, suspension-mounted and recessed rectangular. Combined system with four PVC-insulated copper conductors, two additional conductors for handling any signal (e.g. DALI, DMX, LON, EIB, etc.) and an earth conductor integrated in the aluminium. Three circuits separate switching option.

Materials

Aluminium body

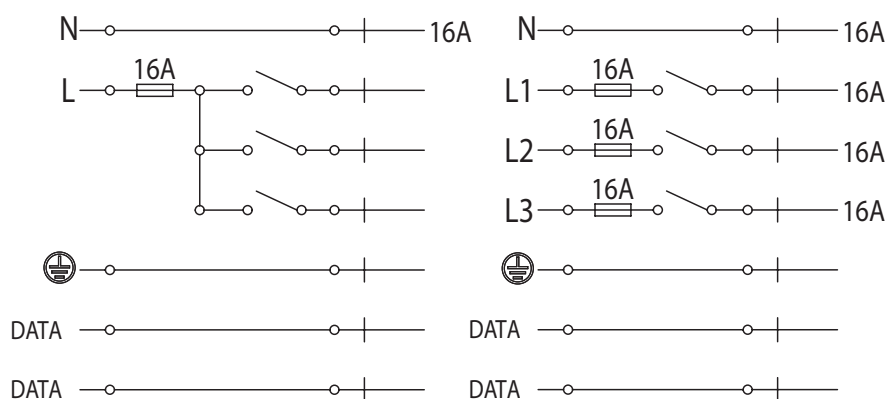
Extensive range of products

Provided with a rectangular section, it comes in the ceiling or suspension-mounted versions measuring 31.4 x h 37.8 mm and recessed measuring 52 x h 37.8 mm, with asymmetric profile for the correct connection of the modules.

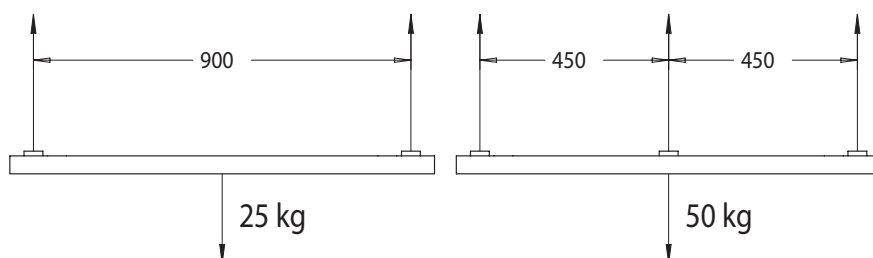


Electrical diagrams

Connection to the 230/400V three-phase power mains allows an overall 16A load, corresponding to 11040 Watts, distributable on three circuits (3x3680 Watts).



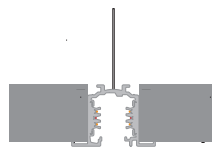
Load capacity



Track system | Three-phase track + DALI | Ceiling/Suspension



Track system | Three-phase track + DALI | Recess



Track system | Three-phase track + DALI



	1 m	2 m	3 m
White	80981	80982	80983
Black	80984	80985	80986
Grey	80987	80988	80989

Track system | Recessed three-phase track + DALI



	1 m	2 m	3 m
White	80990	80991	80992
Black	80993	80994	80995
Grey	80996	80997	80998

Track system | Head power supply



	Alim. DX	Alim. SX
White	81033	81036
Black	81034	81037
Grey	81035	81038



Track system | Internal electrical joint



White	81039
Black	81040
Grey	81041



Track system | Central joint



White	81042
Black	81043
Grey	81044



Track system | L-shaped joint



	Giunto INT	Giunto EST
White	81045	81048
Black	81046	81049
Grey	81047	81050



Track system | Flexible joint



White	81066
Black	81067
Grey	81068



Track system | X-shaped joint



White	81063
Black	81064
Grey	81065



Track system | T-shaped joint



	EST/SX	EST/DX
White	81051	81054
Black	81052	81055
Grey	81053	81056



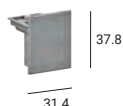
Track system | T-shaped joint



	INT/SX	INT/DX
White	81057	81060
Black	81058	81061
Grey	81059	81062



Track system | Sealing cap | Ceiling/Suspension



White	80999
Black	81000
Grey	81001

Track system | Sealing cap | Recess



White	81002
Black	81003
Grey	81004

Track system | Suspension



	1.5 m	5 m
White	81012	81013
Black	81014	81015
Grey	81016	81017

Track system | Suspension with adjustment devices



	1.5 m	5 m
White	81006	81007
Black	81008	81009
Grey	81010	81011

Track system | Rigid suspension



	1 m
White	81021
Black	81022
Grey	81023

Track system | Tensioner clip for rigid suspension



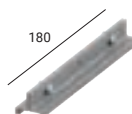
White	81018
Black	81019
Grey	81020

Track system | Ceiling-mounted fixing bracket



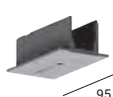
Anod. Al.	81086
White	81087
Black	81088

Track system | Stiffening bracket



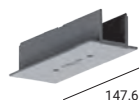
Anod. Al.	81024
White	81025
Black	81026

Track system | Power supply head cover



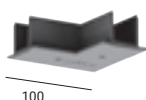
White	81069
Black	81070
Grey	81071

Track system | Central joint cover



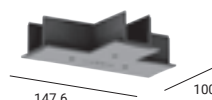
White	81072
Black	81073
Grey	81074

Track system | L-shaped joint cover



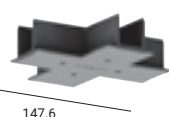
White	81075
Black	81076
Grey	81077

Track system | T-shaped joint cover



White	81078
Black	81079
Grey	81080

Track system | X-shaped joint cover



White	81081
Black	81082
Grey	81083

Track system | Power supply head gasket



White	81084
Black	81085

Track system | 1-Phase ceiling-mounted power supply unit base + DALI



White	81027
Black	81028
Grey	81029

Track system | Recessed adaptor for ceiling-mounted base



White	81030
Black	81031
Grey	81032

Track system | Three-phase track adaptor



White	81094
Black	81095
Grey	81096

Track system | Three-phase track adaptor + DALI



White	81091
Black	81093
Grey	81092

*Use for tapping line voltage only.

* Use for tapping line voltage and/or DALI signal only.

Track system | Conductor cutting pliers



Anod. Al.	81005
-----------	--------------

track system configuration

Earthing continuity

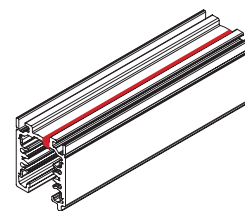
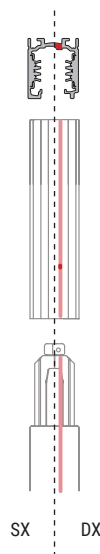
For proper earthing of all accessories that contribute to form a three-phase track system, the continuity of the earthing line between each element is crucial. As shown by the track section herebeside, the position of the earthing line (red) is asymmetric to the central axis of the track; based on this structural difference one can distinguish the right part (including the earthing line) which binds the introduction of all accessories. The positioning of the earth conductor, must be consequential between the accessory and the electrified track structure.

Configuration

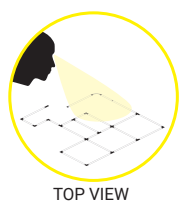
For a correct design, we suggest to create the structure with top plan view, as shown in the drawing below:

Plan view

Axonometric view

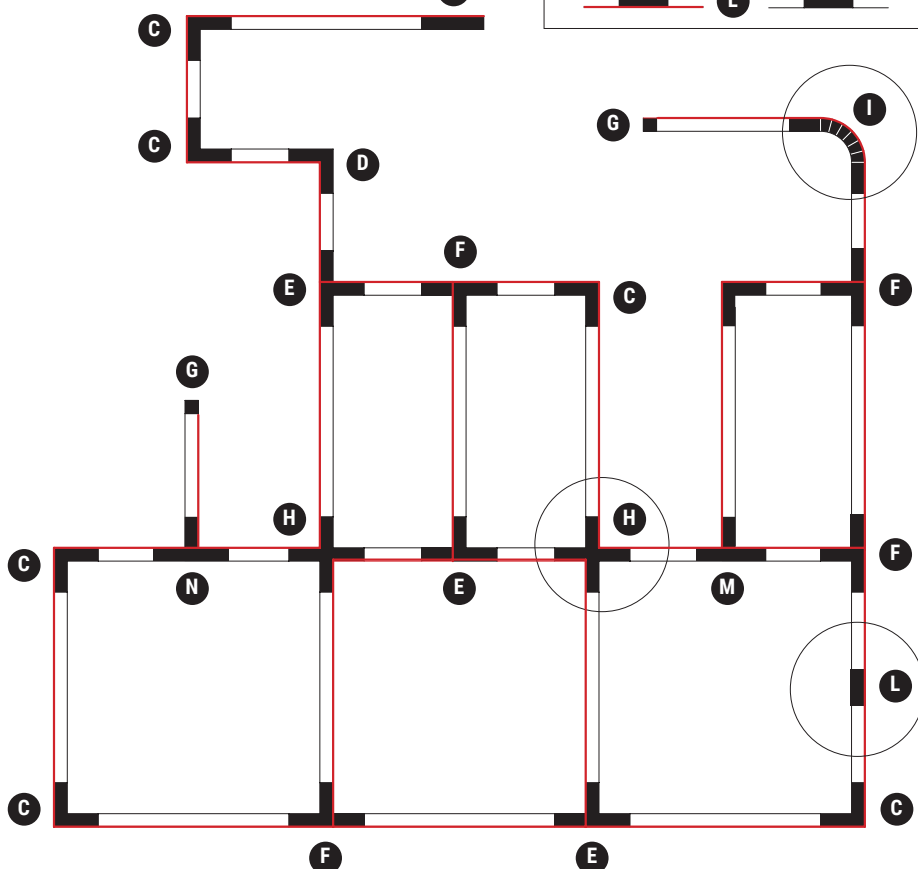
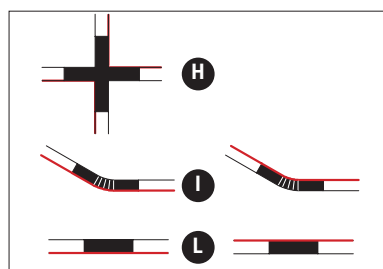


Plan view from above



Land line —

The "H", "I" and "L" accessories can be used in both directions.



A		81033
B		81036
C		81048
D		81045
E		81051
F		81054
G		80999
H		81063
I		81066
L		81042
M		81057
N		81060

