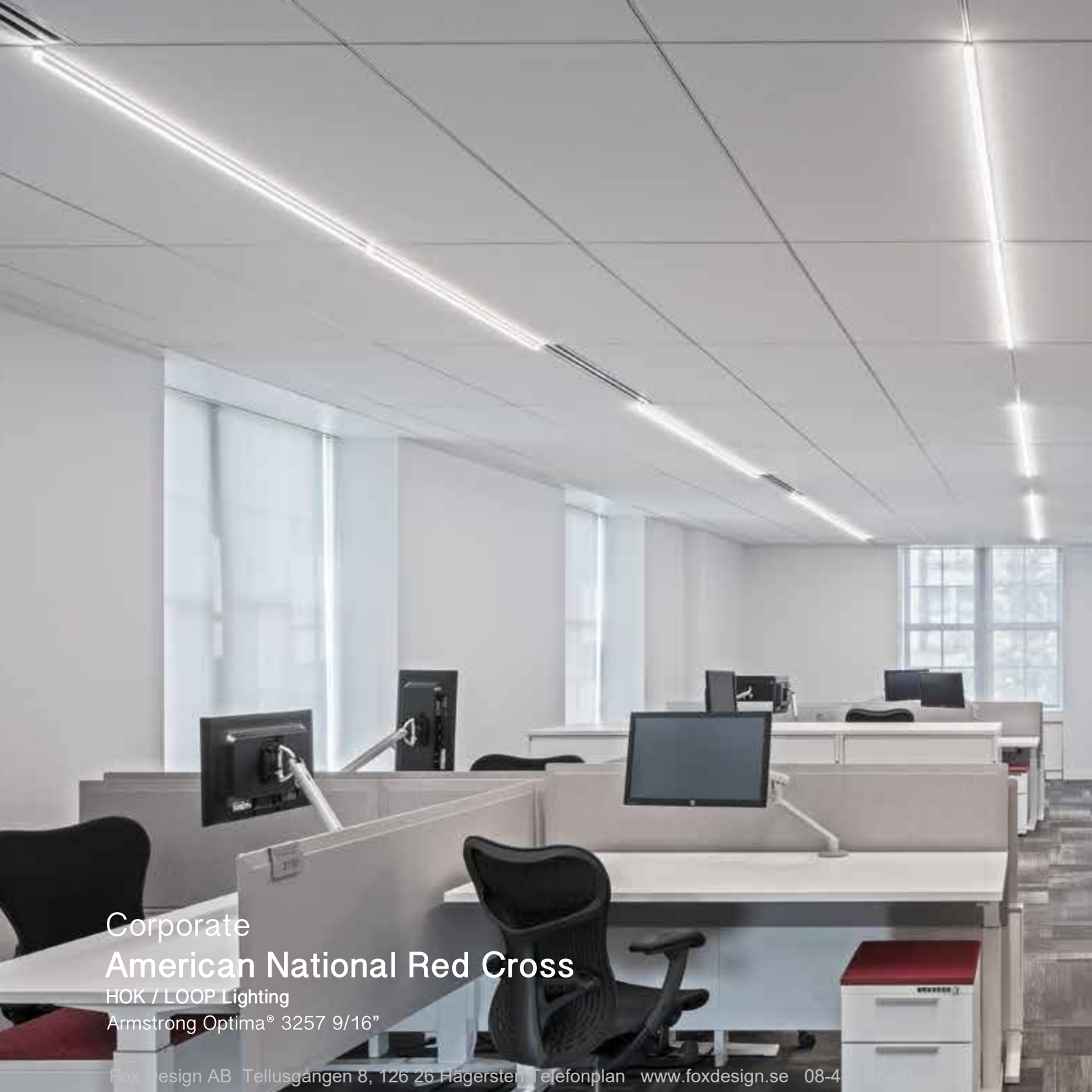




JLC • tech

THE T3BAR LED Smartlight™  
AT A GLANCE

Fox Design AB Tellusgången 8, 126 26 Hägersten Telefonplan [www.foxdesign.se](http://www.foxdesign.se) 08-440 85 40



Corporate  
American National Red Cross  
HOK / LOOP Lighting  
Armstrong Optima® 3257 9/16"

## Project

**American National Red Cross** - Washington, D.C.

Specifier: HOK / LOOP Lighting

Application: National Headquarters

Total square footage: 30,000 sq ft

Average foot candle achieved: 41 FC at desk

### Quantity of products:

676 pcs - TBSL-MW-4-15-B-A-W

T-BAR LED 4' Block Diffusing Lens 9/16" (3,500K)

3 pcs - TBSL-MW-2-15-B-A-W

T-BAR LED 2' Block Diffusing Lens 9/16" (3,500K)

*"We selected the T-BAR LED lighting system for its elegant, transparent, innovative design, which mirrored HOK's renovation goals for the historic American Red Cross National Headquarters. The translucent quality of the T-BAR LED light fixtures provided the perfect visual connection between the perimeter windows of the open office and the glass walls of the private meeting rooms. The client and contractor appreciated the efficiency and ease of installation."*

- Alina Ainza, LOOP Lighting

*"elegant and transparent"*







Educational  
**Sandbox CollABorative**

Perry Dean Rogers | Partners Architects  
Armstrong WoodWorks® Grille Tegular 15/16"



*“seamless integration”*



**Project**

**Sandbox CollABorative,**  
**Southern New Hampshire University - Manchester, NH**  
Specifier: Perry Dean Rogers | Partners Architects  
Application: R&D educational facility  
Total square footage: 750 sq ft  
Average foot candle achieved: 45 FC at desk

**Quantity of products:**

22 pcs - TBSL-MW-4-24-D-A-C  
T-BAR LED 4' Diffusing Lens 15/16" (3,500K)  
custom color - matte black

*“The seamless integration of the T-BAR LED with the wood slatted ceiling offered the Design Team a well-coordinated and aesthetically pleasing solution to the ‘feature space’ of the Sandbox CollABorative.”*

- Todd Shafer, Perry Dean Rogers | Partners Architects





Corporate  
**Worthington Industries**

BHDP Architecture

Armstrong DC FlexZone™ 9/16"

Fox Design AB Tellusgången 8, 126 26 Hägersten Telefonplan [www.foxdesign.se](http://www.foxdesign.se) 08-440 85 40

*"We recently installed the DC FlexZone and T-BAR LED lights in our new Innovation Center as we were looking to utilize innovative products that provide flexibility, energy savings and inspire people to change the status quo."*

- Michael Luh, Vice President of Innovation for Worthington Industries

## Project

**Worthington Industries** - Columbus, OH

Specifier: BHDP Architecture

Application: Conference rooms

Total square footage: 1,516 sq ft

Average foot candle achieved: 40 FC at desk

### Quantity of products:

31 pcs - TBSL-MW-4-15-D-A-W

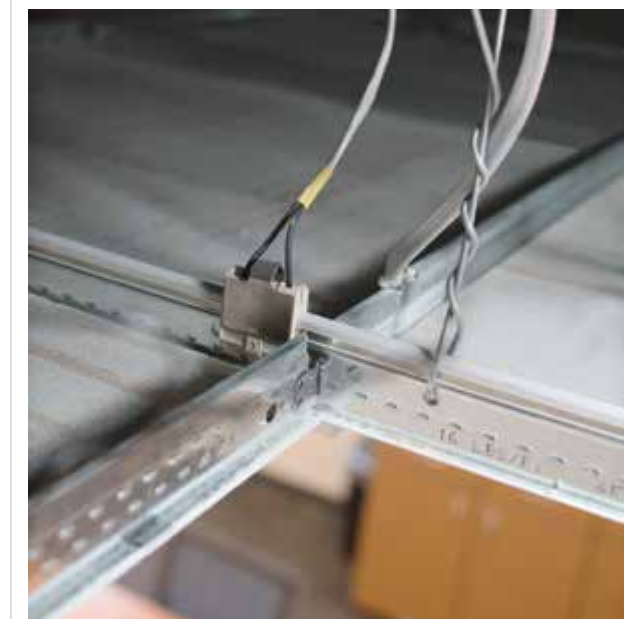
T-BAR LED 4' Diffusing Lens 9/16" (3,500K)

Product installed with Armstrong DC FlexZone™



An EMerge Alliance installation

*"inspire people to change"*







Financial  
**Bank of the West**  
Gensler / Birkenstock Lighting Design  
Armstrong Prelude® XL® 15/16" Ceiling



## Project

**Bank of the West** - San Francisco, CA  
Specifier: Gensler and Birkenstock Lighting Design  
Application: Banking facility  
Total square footage: 5,423 sq ft  
Average foot candle achieved: 40.76 FC at floor

### Quantity of products:

30 pcs - TBSL-MW-4-24-D-U-W  
T-BAR LED 4' Diffusing Lens 15/16" (3,500K)

*“creating a balance”*



*“The T-BAR LED lighting system offers a minimalist, high-performing solution for our retail design needs. The seamless integration into the ceiling system creates a clean and modern aesthetic that enhances the overall design, creating a balance between light and space.”*

-Prasert Wiwatyukhan, Designer at Gensler





Medical  
Springhill Medical Center

AMA Lighting  
Armstrong Prelude® XL® 15/16" Ceiling

Fox Design AB Tellusgången 8, 126 26 Hägersten Telefonplan [www.foxdesign.se](http://www.foxdesign.se) 08-440 85 40



*“functionally efficient”*



## Project

**Springhill Medical Center - Mobile, AL**

**Specifier:** AMA Lighting

**Application:** Birthing suites

**Total square footage:** 310 sq ft

**Average foot candle achieved:** 38.77 FC at floor

### Quantity of products:

6 pcs - TBSL-MW-2-24-D-U-W

T-BAR LED 2' Diffusing Lens 15/16" (3,500K)

6 pcs - TBSL-MW-4-24-D-U-W

T-BAR LED 4' Diffusing Lens 15/16" (3,500K)

*“The T-BAR LED is attractive in appearance and very functionally efficient, giving off a surprising amount of light for its small profile. It was the perfect union of aesthetics and function. Even our contractors said that it is quick and easy to install.”*





Car Dealership  
**Bob Swope Ford**  
Engineered Lighting Sales, Inc.

## Project

**Bob Swope Ford Dealership** - Elizabethtown, KY

Specifier: Engineered Lighting Sales, Inc.

Application: Showroom

Total square footage: 2,800 sq ft

Average foot candle achieved: 40 FC at floor

### Quantity of products:

47 pcs - TBSL-MW-2-24-D-U-W

T-BAR LED 2' Diffusing Lens 15/16" (3,500K)

3 pcs - TBSL-MN-2-24-S-U-W

T-BAR LED 2' Signage Diffusing Lens 15/16" (4,000K)

*"The owner saw the product installed on another project and loved the high-tech and minimalist look. The lighting did not overwhelm the ceiling space and fit nicely with the new updated contemporary look for the showroom."*

- Ernest Cruse II, President of Engineered Lighting Sales

*"loved the high-tech look"*







Corporate  
**AARP Renovation Project**  
OPX Design Consultancy

Fox Design AB, Tellusgängen 8, 126 26 Hägersten Telefonplan [www.foxdesign.se](http://www.foxdesign.se) 08-440 85 40

## Project

**AARP Renovation Project - Washington, D.C.**

Specifier: OPX Design Consultancy

Application: Conference/focus/work rooms

Total square footage: 2,600 sq ft

Average foot candle achieved: 31.5 FC at desk

### Quantity of products:

43 pcs - TBSL-MW-2-15-D-U-W

T-BAR LED 2' Diffusing Lens 9/16" (3,500K)

46 pcs - TBSL-MW-4-15-D-U-W

T-BAR LED 4' Diffusing Lens 9/16" (3,500K)

*“There are many reasons why we chose to use the T-BAR LED fixtures, and probably none more than acoustics. This client was very sensitive to sound transfer between enclosed spaces, and the T-BAR LED was a big part of our solution. Having the fixture integrated into the ceiling grid system allows additional ceiling tiles to be installed to absorb sound, and also to limit sound transfer through the light fixture, which is not the case with a traditional 2x2 fixture.”*

- Erik Wyche, OPX Design Consultancy

*“improved acoustics”*







Corporate  
**Crystal City Design Lab**  
Architect RTKL

Fox Design AB Tellusgången 8, 126 26 Hägersten Telefonplan [www.foxdesign.se](http://www.foxdesign.se) 08-440 85 40



*“The ability to minimize plenum depth and maximize ceiling height, the benefit of placement flexibility with wide spacing along with its integration into the ceiling grid and clean minimal design aesthetic, are the reasons we specified the T-BAR LED at the Vornado Design Lab.”*

-Nathan Ferrance, Architect

*“placement flexibility”*



#### Project

**Crystal City Design Lab - Arlington, VA**

Specifier: RTKL

Application: Office space

Total square footage: 2,400 sq ft

Average foot candle achieved: 32.50 FC at desk

#### Quantity of products:

30 pcs - TBSL-MW-4-15-D-U-W

T-BAR LED 4' Diffusing Lens 9/16" (3,500K)





Hospitality

## Hilton Boston Downtown/Faneuil Hall

Consulting Engineers Vincent A. Dilorio, Inc.  
Armstrong Prelude® XL® 15/16" Ceiling

*"Our goal was to provide a windowless room with bright and even light."*

### Project

**Hilton Boston Downtown/Faneuil Hall** - Boston, MA  
**Specifier:** Consulting Engineers Vincent A. Dilorio, Inc.  
**Application:** Hotel fitness center  
**Total square footage:** 1,080 sq ft  
**Average foot candle achieved:** 35 FC at floor

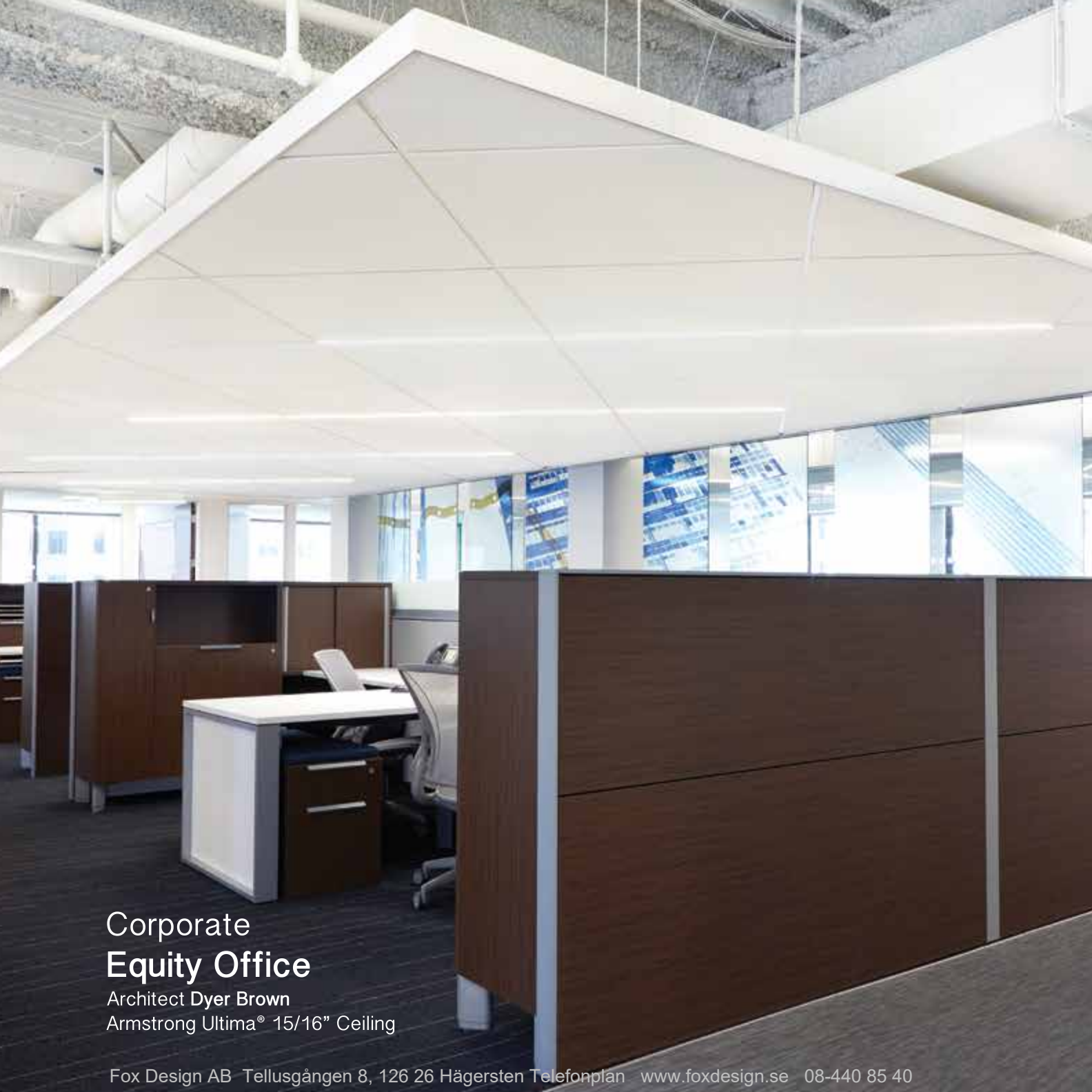
### Quantity of products:

50 pcs - TBSL-HN-2-24-D-U-W  
T-BAR LED 2' Diffusing Lens 15/16" (4,500K)

*"bright and even light"*







## Corporate Equity Office

Architect Dyer Brown  
Armstrong Ultima® 15/16" Ceiling



*“The T-BAR LED was chosen for this space due to the look of the fixture. Equity wanted a minimalistic look and this was exactly what they were looking for. They liked how the light blended in and fit within a ceiling grid.”*

- Heather Stanley, Senior Project Manager at  
Dyer Brown Architects

*“a minimalistic look”*



### Project

**Equity Office** - Boston, MA

**Specifier:** Dyer Brown Architects

**Application:** Office space

**Total square footage:** 2,900 sq ft

**Average foot candle achieved:** 54.5 FC at desk

### Quantity of products:

16 pcs - TBSL-MW-4-24-D-U-W

T-BAR LED 4' Diffusing Lens 15/16" (3,500K)





Corporate  
Saint-Gobain & CertainTeed North American Headquarters  
HLB Lighting

## Project

**Saint-Gobain & CertainTeed  
North American Headquarters** - Malvern, PA

Specifier: HLB Lighting

Application: Conference rooms and cafeteria

Total square footage: 19,000 sq ft

Average foot candle achieved:

35 FC at desk in conference rooms

25 FC at desk in cafeteria

**Quantity of products:**

72 pcs - TBSL-MW-2-15-D-U-W

T-BAR LED 2' Diffusing Lens 9/16" (3,500K)

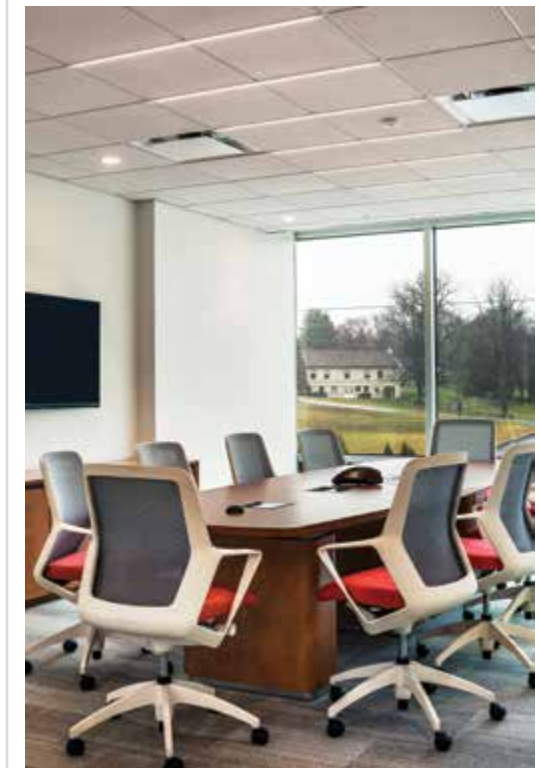
64 pcs - TBSL-MW-4-15-D-U-W

T-BAR LED 4' Diffusing Lens 9/16" (3,500K)

*"This project was meant to showcase Saint Gobain's various building products. The ease of installation and minimal look of the T-BAR LED was great. The unique style is appealing and it was a great fixture to play with - especially to build patterns and unique layouts that would have been impossible with traditional slot fixtures due to installation, costs, and energy use."*

- Lee Brandt, Principal of HLB Lighting

*"unique layouts"*







Corporate  
**McMillan Electric Co.**  
Armstrong Prelude® XL® 15/16" Ceiling

Fox Design AB Tellusgängen 8, 126 45 Hagersten Telefonplan [www.foxdesign.se](http://www.foxdesign.se) 08 440 35 40



*“easy to handle  
and install”*

#### Project

**McMillan Electric Co. Office** - San Francisco, CA

Specifier: McMillan Electric Co.

Application: Headquarters office space

Total square footage: 1,514.59 sq ft

Average foot candle achieved: 25 FC at desk

#### Quantity of products:

20 pcs - TBSL-MW-2-24-D-A-W

T-BAR LED 2' Diffusing Lens 15/16" (3,500K)

12 pcs - TBSL-MW-2-24-B-A-W

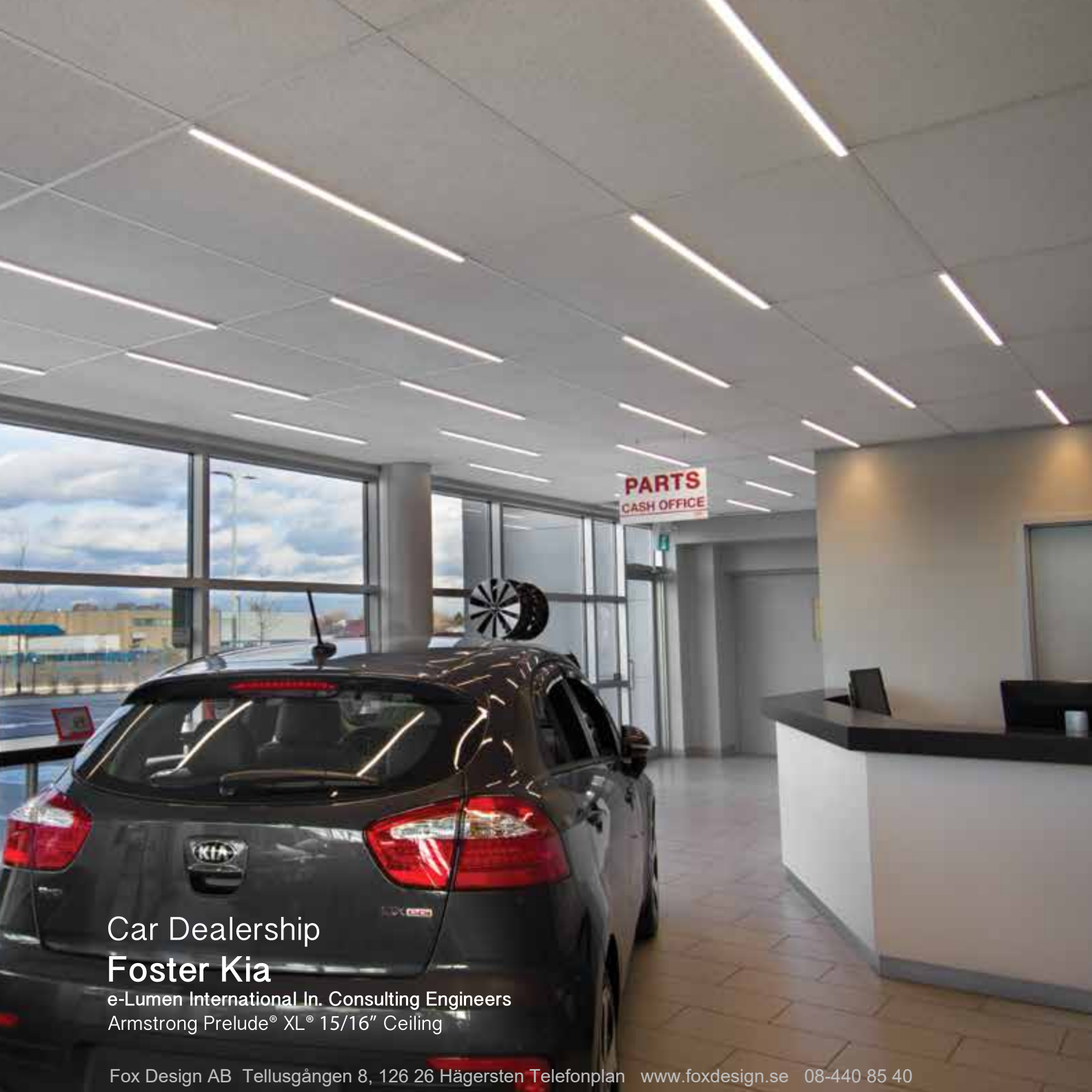
T-BAR LED 2' Block Diffusing Lens 15/16" (3,500K)



*“Our goal in the design phase of our new office was to showcase lighting that was unique, modern and would stay current. We saw the T-BAR LED demo pack and our search was over. The fixtures arrived on time to meet schedule. The T-BAR LEDs were easy to handle and install. The quality and performance exceeds expectations.”*

- David Auch, Vice President of McMillan Electric Co.





Car Dealership  
**Foster Kia**

e-Lumen International In. Consulting Engineers  
Armstrong Prelude® XL® 15/16" Ceiling

## Project

**Foster Kia Dealership** - Toronto, ON Canada

**Specifier:** e-Lumen International In. Consulting Engineers

**Application:** Showroom and offices

**Total square footage:** 2,303.48 sq ft

**Average foot candle achieved:**

82 FC at desk in showroom

42.56 FC at desk in offices

18.9 FC at desk in corridor

**Quantity of products:**

97 pcs - TBSL-MW-4-24-D-U-W

T-BAR LED 4' Diffusing Lens 15/16" (3,500K)

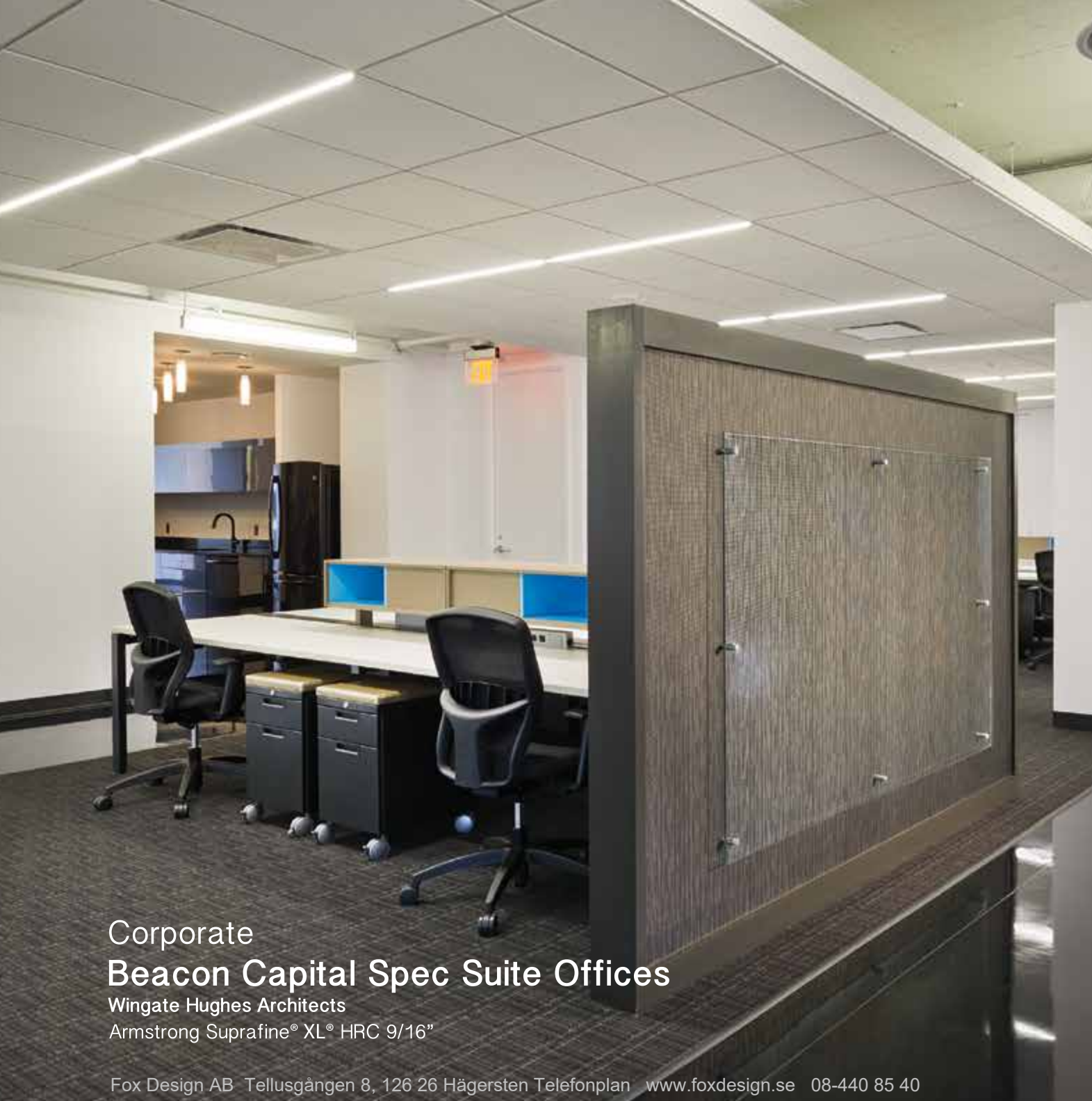
*"The T-BAR LED system was chosen for this particular location because of its unique look like no other product. T-BAR LED allows the ceiling to look clean and adds the flexibility to mount the lights where ever we want. This solution provides the end user less watts per square foot while achieving the high illumination required for this application."*

- Jerry Mobilio, Principal of e-Lumen International Inc.

*"less watts per square foot"*







## Corporate Beacon Capital Spec Suite Offices

Wingate Hughes Architects

Armstrong Suprafine® XL® HRC 9/16"



### Project

**Beacon Capital Spec Suite Offices** - McLean, VA

Specifier: Wingate Hughes Architects

Application: Office space

Total square footage: 14,970 sq ft

Average foot candle achieved: 45 FC at desk

### Quantity of products:

406 pcs - TBSL-MW-4-15-D-U-W

T-BAR LED 4' Diffusing Lens 9/16" (3,500K)

*“set the  
sustainable  
lighting  
standard”*

*“Wingate Hughes Architects set the building's sustainable-lighting standard when we installed the T-BAR LED lights in the four Beacon Capital Spec Suite Offices. Additionally, the four suites appeal to tenants of varying styles and are flexible in function and aesthetic. In anticipation of room and office conversions, the lights are installed on a standard spacing module allowing the future tenant to put up walls (or remove them) without affecting the lighting layout.”*

- Meghan Fuentes, Wingate Hughes Architects





Corporate  
**UNUM Therapeutics**  
Perkins + Will  
Armstrong Dune® Beveled Tegalur 15/16"

## Project

**UNUM Therapeutics** - Cambridge, MA

Specifier: Perkins + Will

Application: Office space

Total square footage: 3,500 sq ft

Average foot candle achieved: 32 FC at desk

### Quantity of products:

162 pcs - TBSL-MW-4-24-D-A-W

T-BAR LED 4' Diffusing Lens 15/16" (3,500K)

78 pcs - TBSL-MW-2-24-D-A-W

T-BAR LED 2' Diffusing Lens 15/16" (3,500K)

18 pcs - TBSL-MW-4-24-A-A-W

T-BAR LED 4' Asymmetric Lens 15/16" (3,500K)

30 pcs - TBSL-MW-4L-24-D-A-W

T-BAR LED 4L Model Diffusing Lens 15/16" (3,500K)

*"The lights convey a minimalist, modern feel.  
The flexibility to adjust the spacing and alignment  
of the T-BAR LEDs give our space a creative,  
non-institutional feel that is hard to avoid with  
most alternative lighting options."*

- Chuck Wilson, CEO of UNUM Therapeutics

*"a creative, non-institutional feel"*







Government  
**East Courts Building**  
Architect Dick & Fritsche Design Group  
Armstrong Prelude® XL® 15/16" Ceiling



*“a very clean solution”*



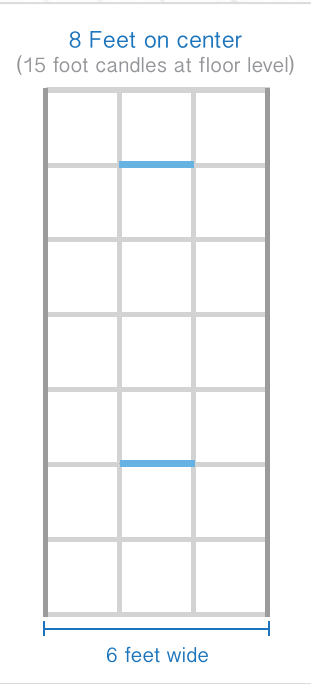
*“Aesthetically, the T-BAR LEDs provided a very clean solution. Functionally, they allow speakers to be positioned based on where they are best suited. And to top it off, the various ducts, sprinkler pipes, and electrical conduits easily fit without having to coordinate around light locations.”*

- Chad Billings, Principal of DFDG

**Project**

**East Courts Building - Phoenix, AZ**  
Specifier: DFDG - Dick & Fritsche Design Group  
Application: Courtrooms and hallways  
Total square footage: 2,900 sq ft  
Average foot candle achieved: 54.5 FC at desk

**Quantity of products:**  
72 pcs - TBSL-HN-2-24-D-U-W  
T-BAR LED 2' Diffusing Lens 15/16" (4,500K)  
30 pcs - TBSL-HN-4-24-D-U-W  
T-BAR LED 4' Diffusing Lens 15/16" (4,500K)



(Hallway layout as shown in photo on left)





*"The raked ceiling and the T-BAR system allowed us to provide the general area lighting that we needed along with the marquee sparkle that every Theater desires for an entrance. The rake was important for the architectural effect as it made the lighting itself more visible. The T-BAR's low profile proved to be the one lighting system that could achieve both effects."*

- Kathy Abernathy, Principal of  
Abernathy Lighting Design

4 Feet on center  
(20 foot candles at floor level)


8 feet wide  
(Layout as shown in photos)

**Project**  
**Bishop McVinney Memorial Auditorium**  
- Providence, RI

○ **Specifier:** Abernathy Lighting Design and Torrado Architects

**Application:** Auditorium entrance lobby  
**Total square footage:** 1,830 sq ft  
**Average foot candle achieved:** 20 FC at floor

**Quantity of products:**  
8 pcs - TBSL-HW-2-24-D-U-W  
T-BAR LED 2' Diffusing Lens 15/16" (3,000K)  
44 pcs - TBSL-HW-4-24-D-U-W  
T-BAR LED 4' Diffusing Lens 15/16" (3,000K)

*"the architectural effect"*



Religious  
**Bishop McVinney Memorial Auditorium**  
Abernathy Lighting Design / Torrado Architects





Project

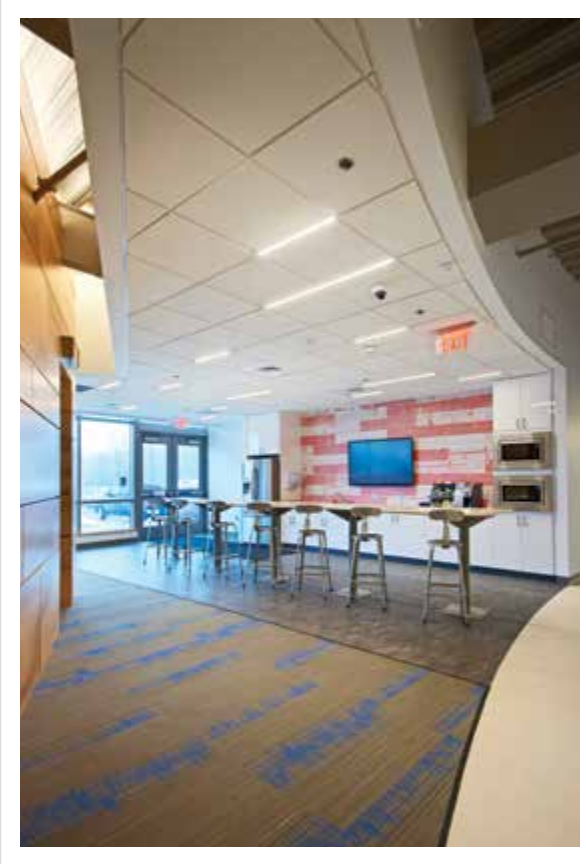
AWeber Communications - Chalfont, PA  
Specifier: Wulff Architects Inc.  
Application: Recreation room  
Total square footage: 1,626 sq ft  
Average foot candle achieved: 28 FC at floor

Quantity of products:  
50 pcs - TBSL-HN-2-15-D-U-W  
T-BAR LED 2' Diffusing Lens 9/16" (4,500K)  
9 pcs - TBSL-HN-4-15-D-U-W  
T-BAR LED 4' Diffusing Lens 9/16" (4,500K)

*“With less than three inches above the suspended ceiling system, the T-BAR LED was the perfect fit due to its minimum plenum occupancy that directly integrates into the ceiling grid.”*

*“minimum plenum occupancy”*

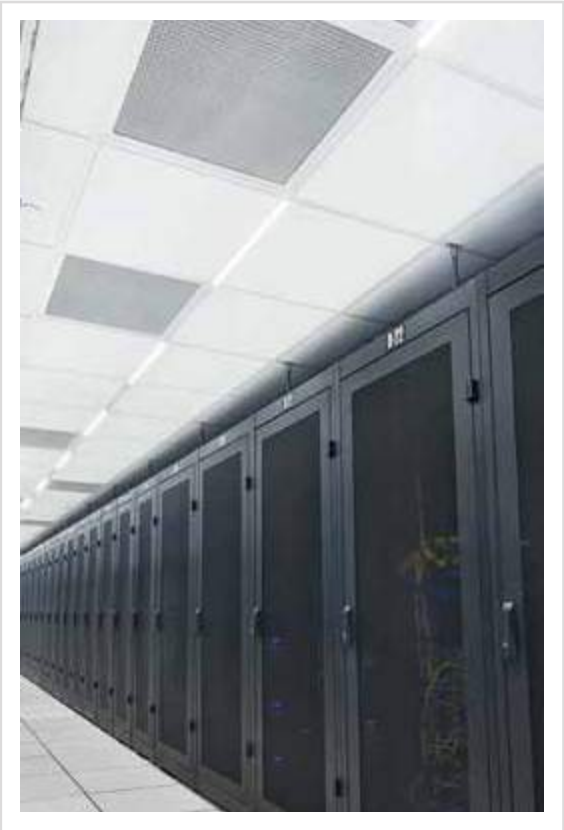
Corporate  
AWeber Communications  
Wulff Architects Inc.  
Armstrong Suprafine® XL® 9/16" Ceiling







Data Center  
Mid Atlantic Region  
Onsite Facility Management  
Armstrong DC FlexZone™ 15/16"



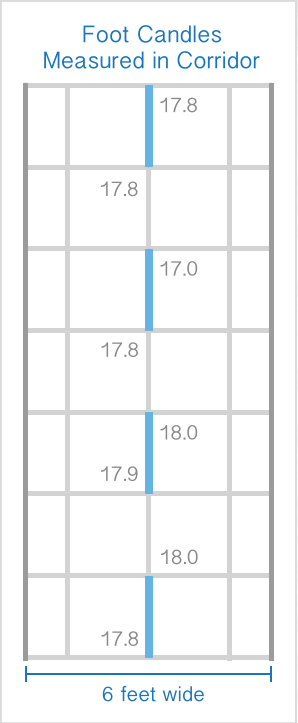
*“While the Data Center generates an excessive amount of heat and requires complex ventilation systems, the T-BAR LED helps maintain that efficiency with low voltage DC power without generating extra heat.”*

# “low voltage DC power”

**Project**  
**Mid Atlantic Region - Data Center**  
**Specifier:** Facility Management and Illuminations Inc.  
**Application:** Data center hot aisles  
**Total square footage:** 1,035 sq ft  
**Average foot candle achieved:** 17.7 FC at floor

**Quantity of products:**  
48 pcs - TBSL-MW-2-24-D-A-W  
T-BAR LED 2' Diffusing Lens 15/16" (3,500K)

Product installed with Armstrong DC FlexZone™







JLC • tech



[www.tbarledsmartlight.com](http://www.tbarledsmartlight.com)

370 Corporate Park • Pembroke, MA 02359, USA • [info@jlc-tech.com](mailto:info@jlc-tech.com) • 1-781-826-8162

© 2016 JLC-Tech LLC, All Rights Reserved

Fox Design AB Tellusgången 8, 126 26 Hägersten Telefonplan [www.foxdesign.se](http://www.foxdesign.se) 08-440 85 40